

Assembly Instructions

English



Grundig SAT Systems

Head-end Receiver Modulator

HRM 326/4

GSS
Grundig SAT Systems GmbH
Beuthener Straße 43
D-90471 Nuremberg

Phone: +49 (0) 911 / 703 8877
Fax: +49 (0) 911 / 703 9210
E-mail: info@gss.de
Internet: <http://www.gss.de>



Contents

1 Safety regulations.....	3
2 General information	4
2.1 Scope of delivery.....	4
2.2 Meaning of the symbols used	4
2.3 Technical specifications	4
2.4 Description	5
2.4.1 Software query	5
3 Installation	6
3.1 Installing the cassette in the head-end station.....	6
3.2 EMC regulations.....	7
3.3 Connecting the cassette	7
4 The control panel at a glance	8
4.1 Menu items	8
4.2 Control panel	8
5 Programming	9
5.1 Programming procedure	9
5.2 Programming the cassette	10
Selecting the cassette / channel strip.....	10
Setting the output frequency	11
Setting the input frequency.....	12
Saving settings	12
6 Final procedures.....	13

1 Safety regulations



- Assembly, installation and servicing should be carried out by authorised electricians.
- Switch off the operating voltage of the system before beginning with assembly or service work or pull out the mains plug.
- Do not perform installation and service work during thunderstorms.
- Install the system so it will not be able to vibrate...
 - in a dust-free, dry environment
 - in such a manner that it is protected from moisture, fumes, splashing water and dampness
 - somewhere protected from direct sunlight
 - not within the immediate vicinity of heat sources
 - in an ambient temperature of -20 °C to +50 °C.
- Ensure that the head-end station is adequately ventilated. Do not cover the ventilation slots.
- Beware of short circuits
- No liability is accepted for any damage caused by faulty connections or inappropriate handling.
- Observe the relevant standards, regulations and guidelines on the installation and operation of antenna systems.
- Earth the SAT receiver in accordance with DIN EN 50083-1 / 60728-11 and VDE 0855 (earthed, equipotential bonding rail).
- **For further information please read the assembly instructions for the head-end station used.**



Take action to prevent static discharge when working on the device.



Electronic devices should never be disposed of in the household rubbish. In accordance with directive 2002/96/EC of the European Parliament and the European Council from January 27, 2003 which addresses old electronic and electrical devices, such devices must be disposed of at a designated collection facility. At the end of its service life, please take your device to one of these public collection facilities for proper disposal.

2 General information

2.1 Scope of delivery

- 1 HRM 326/4 cassette
- 1 CD (assembly instructions)

2.2 Meaning of the symbols used



Important note



General note



Performing works

2.3 Technical specifications

The requirements of the following EU directives are met:

73/23/EEC, 89/336/EEC

The product fulfils the guidelines and standards for CE labelling.

HF input:

Input frequency range:	87.5 ... 108.0 MHz
Input level:	50 ... 80 dB μ V
Channel spacing:	25 kHz
Input impedance	75 Ω

HF-Output:

Output frequency range:	87.5 ... 108.0 MHz
Output level:	typ. 98 dB μ V
Channel spacing:	50 kHz
Output impedance:	75 Ω

Connections:

HF input:	IEC socket
HF output:	IEC socket
10-pin connector	for all supply voltages and for the I ² C bus.

2.4 Description

The cassette contains four FM-FM converters. The FM signals received are mixed to IF level and then transformed to a free tunable output frequency in the range of 87.5...108 MHz. The technical data of the four converters are equal. The four converted signals are combined by a combiner and then passed to the cable network via the HF output of the cassette and the HF output collector of the head-end station.

The four converters of the cassette are indicated as A, B, C and D in the display. At the factory, the output levels of the four converters are preset to the same value. The common output level (A/B/C/D) of the quadruple cassette can be adjusted at the HF output collector of the head-end station.

The software version of the control unit appears on the two-line LC display after switching on the head-end station.

The cassette is intended for operation in the following head-end stations:

- STC 1200
- STC 316
- STR 19-8
- PST 19-1

2.4.1 Software query

If necessary, you can activate the indication of the software version of the control unit manually:

- Press any two keys on the control unit of the head-end station simultaneously until the display goes dark and the software version, e.g. "**V 40**", is displayed.

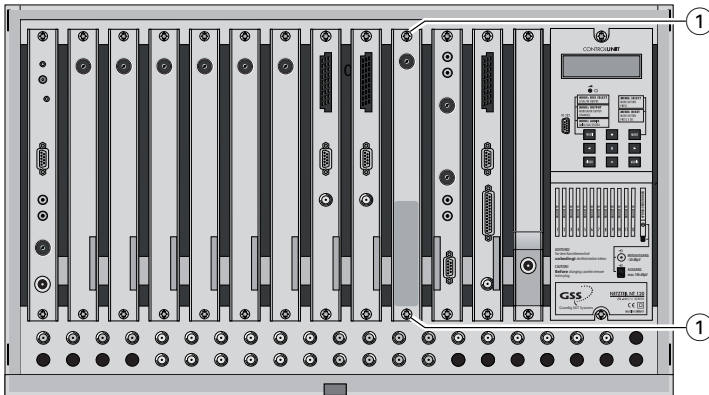
3 Installation

3.1 Installing the cassette in the head-end station



- Ensure the head-end station is mounted so it will not be able to vibrate. Avoid, for example, mounting the head-end station onto a lift shaft or any other wall or floor construction that vibrates in a similar way.
- Before installing or changing a cassette unplug the power cable from the mains power socket.

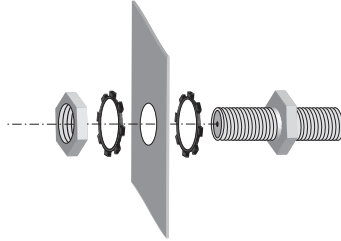
- Remove the fastening screws (1) of an unoccupied slot from the bracket of the head-end station.
- Insert the cassette in this slot and push it into the housing.
- Align the cassette and apply slight pressure to connect it to the connections of the board and the HF bus bar.
- Fasten the cassette with the (1) screws.



3.2 EMC regulations



To comply with the current EMC regulations, it is necessary to connect the lines leading in and out of the head-end station using cable terminals. When mounting the cassette in an STR 19-8 head-end station which is installed in a 19" cabinet, make sure the connections leading in and out for the 19" cabinet are made using cable terminals.

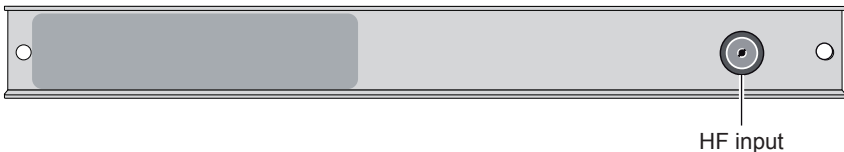


- Insert the required number of cable terminals in the openings provided in the head-end station or in the 19" cabinet.
—> Cable terminals are not included in the scope of delivery.



Tighten the nut on the cable terminals until the teeth on the lock washer have penetrated the exterior coating and a good connection is made between the housing and cable terminal.

3.3 Connecting the cassette



- Connect the HF input cable to the "**HF input**" socket of the cassette.

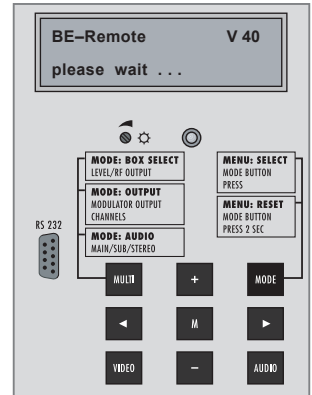
4 The control panel at a glance

4.1 Menu items

Program the cassette using the buttons on the control unit of the head-end station. The two-line display of the control unit then shows the menus.

Use the **MODE** key to select the following main menu items:

- Cassette / Channel strip
- Output frequency
- Input frequency



4.2 Control panel

– The key pad on the head-end station is used to scroll through the menus step-by-step:

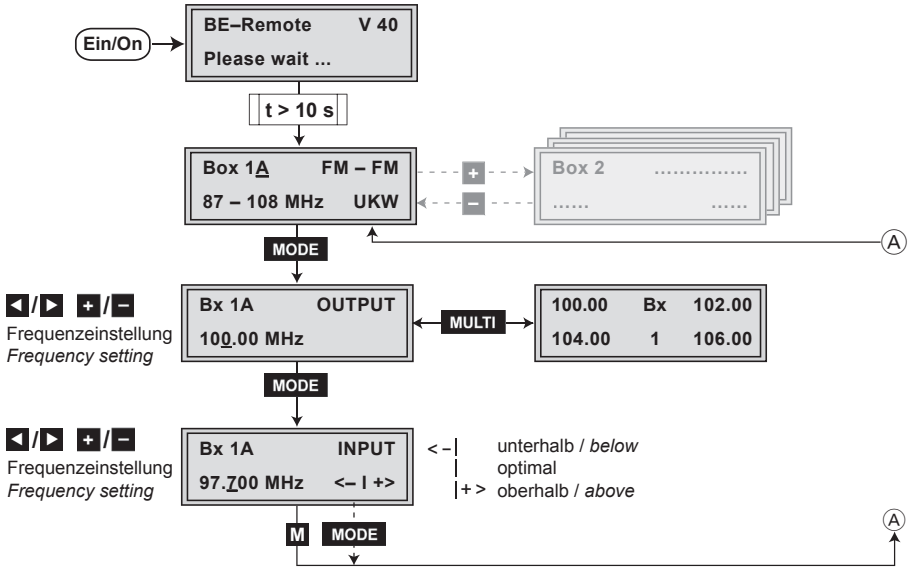
- MODE** scrolls forward through the menu.
- ← / →** select parameters in the menu.
- + / -** set values, initiate actions.
- MULTI** selects sub-menus.
- M** saves all entries.



– The parameters to be set are underlined (cursor).

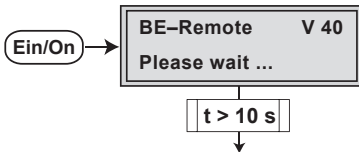
5 Programming

5.1 Programming procedure

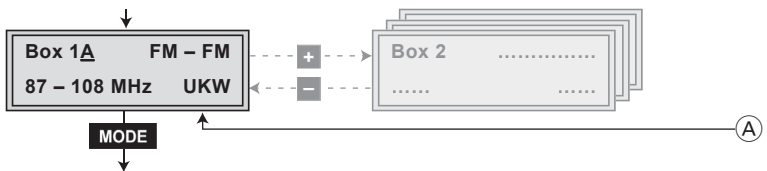


5.2 Programming the cassette

- > Pressing the **MODE** button for longer than 2 seconds cancels the programming procedure. This takes you back to the program item “Selecting the cassette / channel strip” from any menu. If another cassette is selected by pressing the buttons **+**/**-** any entries that have not been saved are reset to the previous settings.
- > Entries in the menus can be saved by pressing the **M** key. You are taken back to the “Selecting the cassette / channel strip” menu item.
 - Switch on the head-end station
 - > The display shows the software version (e.g. **V 40**)
 - > The processor reads the cassettes’ data (approx. 10 seconds).



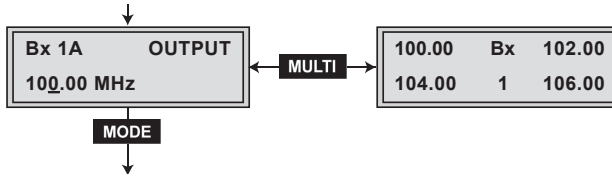
Selecting the cassette / channel strip



- If necessary select the cassette you want to program (e.g. **Box 1**) or the channel strip to be programmed (**Box 1 A**, **1 B**, **1 C**, **1 D**) by repeatedly pressing the **+**/**-** buttons.
 - > The display shows e.g. the menu “**Box 1A FM - FM**”:
 “**Box 1**” stands for slot 1
 “**FM - FM**” Type of cassette
 “**87 - 108**” adjustable frequency range
- Press the **MODE** button.
 - > The “Setting the output frequency” – “**OUTPUT**” menu is activated.

Setting the output frequency

◀/▶ +/−
Frequenzeinstellung
Frequency setting



- Use **◀/▶** to position the cursor under the digit of the frequency displayed to be set.
- Press **+/−** to set the respective digit of the output frequency wished.
- Repeat the procedure by the quantity of the digits to be set.
→ To get a better overview, it is possible to display the 4 output channels of the cassette simultaneously. For this press the **MULTI** button in the **"OUTPUT"** menu.

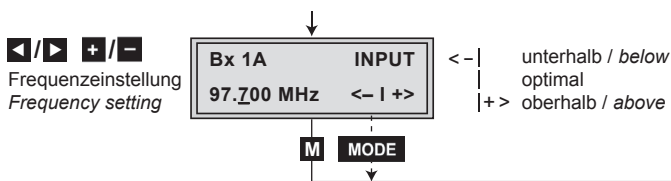
A		B
100.00	Bx	102.00
104.00	1	106.00
C		D



It is necessary to keep a minimum distance of 300 kHz between the FM output frequencies used.

- Press the **MODE** button.
→ The "Setting the input frequency" – **"INPUT"** menu is activated.

Setting the input frequency



- Use ◀/▶ to position the cursor under the digit of the frequency displayed to be set.
- Press +/− to set the respective digit of the input frequency wished.
- Repeat the procedure by the quantity of the digits to be set.

—> Indications in the display:

" <- | " the input frequency is set too low.

" | " the input frequency is set correctly.

" | +> " the input frequency is set too high.

- If necessary repeat the setting until " | " is shown in the display.

Saving settings

- Press the **M** button.
 - > The settings are saved.
 - > Back to the "Selecting the cassette / channel strip" menu via connection (A) (page 10).
 - > By pressing the **MODE** button, you will be returned to the menu item "Selecting the cassette / channel strip" via connection (A) **without** saving the programmed data (page 10).

6 Final procedures



After installing the head-end station, upgrading accessories or installing cassettes it is necessary to tighten all cable connections, cable terminals and cover screws in order to maintain compliance with current EMC regulations securely.

- Securely tighten the cable connections using an appropriate open-ended spanner.
- Measure the output levels of the other cassettes and tune them to a uniform output level using the appropriate level controls or software dependent on the head-end station used. Please regard the assembly instructions of the respective head-end station.
 - > In order to prevent interference within the head-end station and the cable system, the output levels of the digital cassettes must be set lower by 8 dB compared to analogue cassettes.
- Mount the front cover (s. assembly instructions of the head-end station).

Service:

Phone: +49 (0) 911 / 703 2221
Fax: +49 (0) 911 / 703 2326
Email: service@gss.de